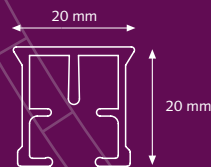


PRODUCT INFORMATION

- Smooth, belt driven motorized curtain track system.
- High Frequency Technology.
- Can be operated by Wall Switch, Remote Control (high frequency) or Time Switch (high frequency).
- Silent motor, speed: 15 cm/sec.
- Easy to connect to Building Automation systems.
- Bi-directional Bus-controller available, which enables data feedback communication.
- Available in 30, 45 and 60 Watt;
- Motor pulley connects motor and FMS track.
- All KS brackets applicable.
- Torque: 0,8 Nm (30 Watt), 1.2 Nm (45 Watt), 1.6 Nm (60 Watt).
- Noise level FMS motor < 42 dB(A)
- Dimensions 30 Watt Motor: 60 x 50 x 200 mm
 (2.36 x 1.97 x 7.87")
 45 Watt Motor: 60 x 50 x 230 mm
 (2.36 x 1.97 x 9.06")
 60 Watt Motor: 60 x 50 x 230 mm
 (2.36 x 1.97 x 9.06")

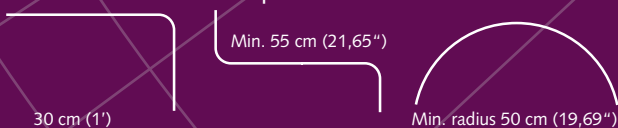
SPECIFICATIONS TRACK

- Weight: 303 gr/mtr (3,25 ounce/ft.)
- Aluminium Extrusion
- Size: 20 x 20 mm (0.79 x 0.79")
- Scale 1:1



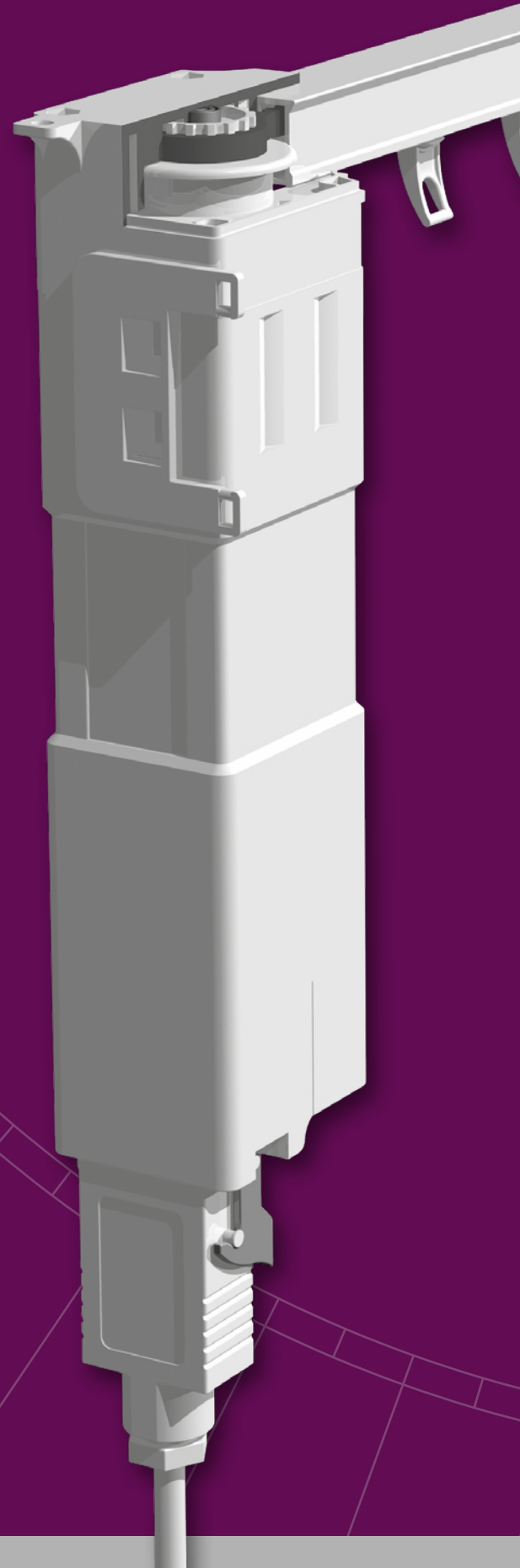
BENDING / CURVING

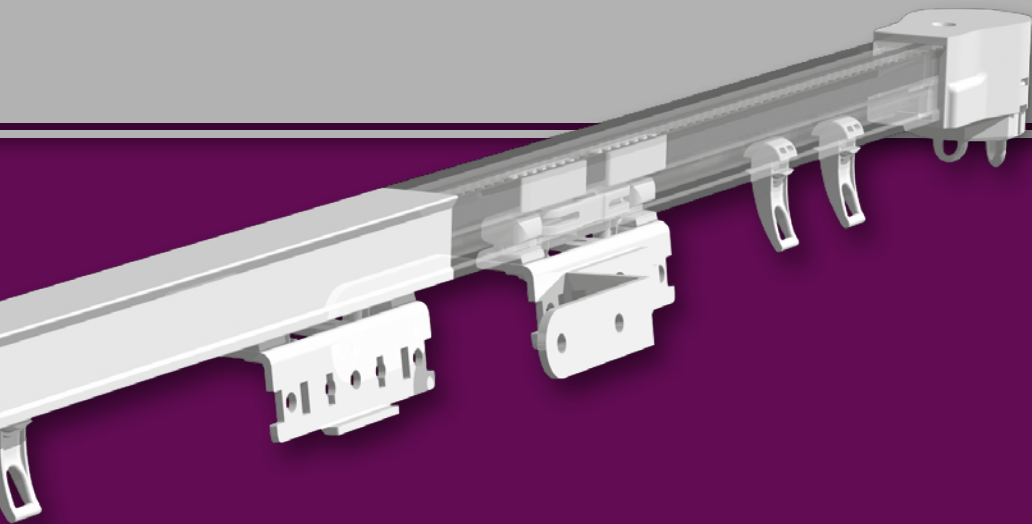
The motor can be used in a track with one or two bends of 90 degrees. The track can be bent and reversed bent with a radius of 20 cm (8"). Continuous curving can be done with the electric powered bender.



TANDEM APPLICATION

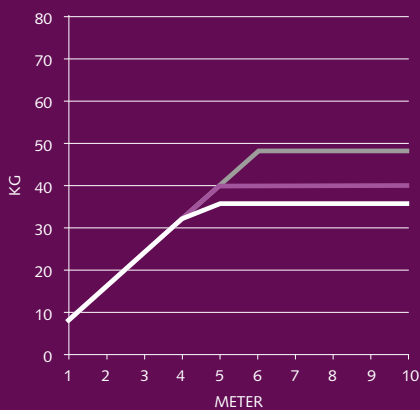
More information is available on request.



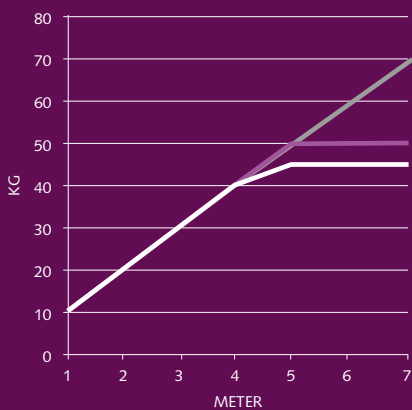


- Straight
- One Bend/Curve
- Two Bends

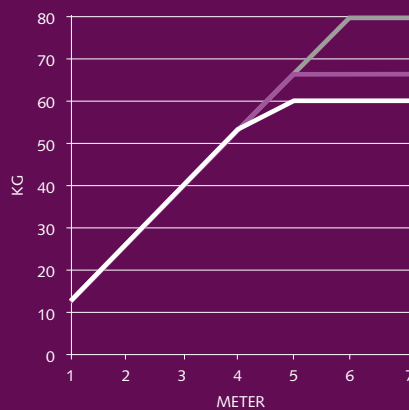
FMS LOAD TABLE (WITH CARRIERS) 30 WATT:



FMS LOAD TABLE (WITH CARRIERS) 45 WATT:



FMS LOAD TABLE (WITH CARRIERS) 60 WATT:



CONTROL OPTIONS

HIGH FREQUENCY



6 Channel remote control, possibility to control up to 6 systems individually and in group. Radio control, range up to 30 meters. Including magnetic wall support.

DOMOTICS CONTROL



Wired or wireless Domotics is possible. Consult Forest for more information.

SWITCH CONTROL



For wiring and connection instructions, consult User/Installation Manual.

BUILDING AUTOMATION



The FMS can be connected to any Building Automation system, by relay control.

HOTEL CONTROL



The FMS can be connected to any Hotel Automation system, by relay control.

OTHER CONTROL OPTIONS



Z-Wave and Somfy receivers available upon request.

More detailed schedules with further user options are mentioned in the separate FMS application datasheet. Available on request or on our website.

FOREST PARTNERSHIPS



www.amx.com
In Concert Partner.



www.knx.nl
KNX partner



www.z-wave.com
Z Wave alliance partner

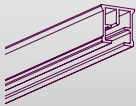


www.crestron.com
I2P partner

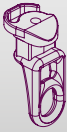


www.smart-homes.nl
Smart homes partner

FMS can easily be applied in current Building
and Home Automation systems.

FMS TRACK

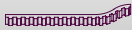
Aluminium extrusion, powder coated, lubricated.	10/bundle
5,80 m (19'), white	5101001580
7 m (23'), white	5101001700
7 m (23'), black	5101006700
7 m (23'), silver	5101003700

FMS SILENT CARRIER

"Clickable", offset, made of UV-resistant plastic. Can be clicked into the track after installation.	250/box
White	2510101000-S
Black	2510106000-S
Silver	2510103000-S

FMS/CCS/MRS WHEEL CARRIER

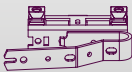
The wheel carrier goes smoothly over a splice.	5210101002 100/box
---	-----------------------

FMS TRANSPORT BELT

Toothed belt, to be installed inside the FMS Track.	5105501000 100 mtr/roll
--	----------------------------

FMS MASTER CARRIER

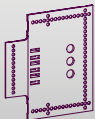
UNDERLAP Arm is reversible; Click on stiffner applicable	15/box
White	5215801010
Silver	5215803000
Black	3015606000
Brown	5215805000

FMS MASTER CARRIER

OVERLAP Arm is reversible; Click on stiffner applicable	15/box
White	5215901010
Silver	5215903000
Black	3015706000
Brown	5215905000

FMS MASTER CARRIER

UNDERLAP SINGLE R/L Multifunctional - arm is reversible - will slide trough curves.	15/box
White	3016001000
Silver	3016003000
Black	3016006000

CLICK ON STIFFNER

Recommended to attach to the FMS Master Carriers, stiffner to be stitched into the curtain.	5116001001 15/box
--	----------------------

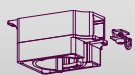
PROLONGED OVERLAP CLICK ON

15 cm long.	15/box
White	95000001010
Black	95000006010

EASYFLEX CURVED ARM

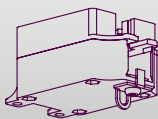
	15/box
White	5135901020
Silver	5135903020
Black	5135906020

FMS MOTOR PULLEY



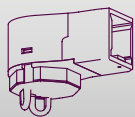
Connects motor with FMS Track. 1/box
 White 5103011000
 Silver 5103013000
 Black 5103016000

FMS MOTORPULLEY UPSIDE DOWN



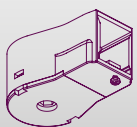
Connects motor upside-down with FMS track 1/box
 51330011003

FMS RETURN PULLEY



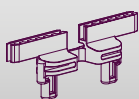
Reverses the FMS transport belt in the FMS Track. 1/box
 White 5103011100
 Silver 5103013100
 Black 5103016100

FMS RETURN PULLEY EASYFLEX



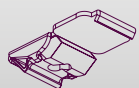
For single-closing curtains. 1/box
 White 5103011102
 Black 5103016102
 Silver 5103013102

FMS CONNECTOR



To fix the FMS Master Carrier onto the FMS transport belt. 50/box
 White 5103011500
 Silver 5103013500
 Black 5103016500

SMART KLICK CEILING BRACKET



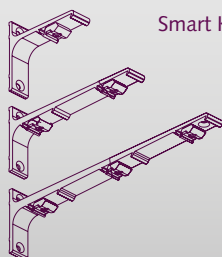
"Klicks" onto track, powder coated. Including Cover Cap 100/box
 White 1019201001
 Silver 1019203000
 Black 1019206000
 Brown 1019205000

SMART KLICK COVER CAP



Fits on SK wall and ceiling brackets 100/box
 White 1019201000
 Silver 1019203000
 Black 1019206000
 Brown 1019205000

ALUMINIUM WALL BRACKET



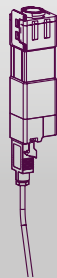
Smart Klick, powder coated. 1020301...
 7,5 cm single (3") 20/box
 10 cm single (4") 20/box
 15 cm double (6") 15/box
 20 cm double (8") 15/box
 25 cm triple (10") 10/box

FMS TRACK JOINER



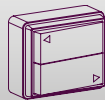
Used to make a solid connection between two pieces of track. 25184..000 10/box
 Colours 01, 03, 06

FMS MOTOR



30 Watt available: 1 pc/box
 230 Volt 5101001030
 115 Volt 5101011030
45 Watt available:
 230 Volt 5101001045
 115 Volt 5101011045
60 Watt available:
 230 Volt 5101001060
 115 Volt 5101011060
Tandem Motor 5101001088

FOREST PULSE WALL SWITCH



Can operate one motor only. 5201001910 1/box
 Dimension: 6,5 x 5,5 x 2,7 cm

MULTI RECEIVER/WALL SWITCH BCS/FMS



Receiver to be used with Multi remote control. 5104011500 1/each

Dimension: 8,5 x 8,5 x 3,5 cm.

MULTI DIAMOND REMOTE



6+1 channel remote control. 1 piece/box
 Including wall mount.

White 5201091460
 Black 5201096460

MULTI WIRELESS WALL SWITCH



2-channel wall switch in combination with Shuttle Multi receiver. 1/each
 Dimension: 8,5 x 8,5 x 1 cm.
 White 5201001480
 Black 5201006480

FOREST MULTI WIRELESS SWITCH WITH TIMER



15 channels 1/each
 White 5201001481
 Black 5201006481

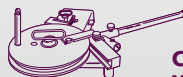
FOREST LUBRICANT



To lubricate components during assembly. 1/box
 5109010000

CONTRACT BENDING TOOL

For CS/CCS/FMS/CRS/MTS 1/each
 2560000000



CS/CCS/FMS Bending Wheel 1/each
 2561000000



FMS Bending strip 1/set
 90 cm (3'). 5160100000
 7 mtr (23'). 5160600000

FOREST
 DRAPERY HARDWARE

